

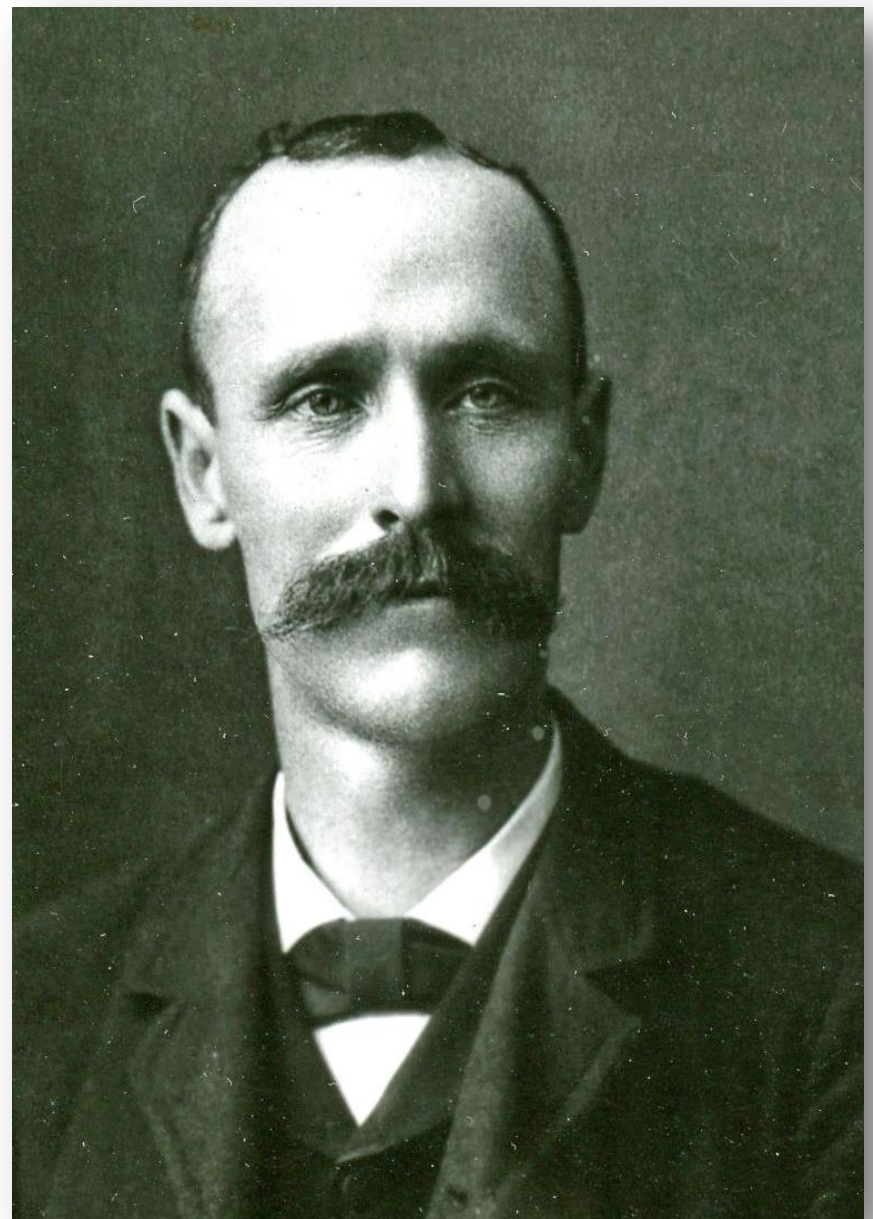
# John Hanna (1858 - 1931)



John Hanna was an extraordinary Birmingham citizen who worked in both the private and public sectors of the village. He was an entrepreneur, a postmaster, and a village trustee, just to name a few of his occupations.

Hanna was an Irish immigrant who came to the country at the age of three. He moved to Birmingham in 1878 and worked at a grocery store owned by John Bigelow until 1884.

Later Hanna and Alec Park opened a general store on the corner of (Old) Woodward and Maple.



***John Hanna***



***Hanna's General Store, located next to the O'Neal Building on the southwest corner of Woodward and Maple. Birmingham Museum***

In 1891, Hanna began his work in the public sector as a trustee to the village council. He was reelected four more times. During the same time period, Hanna also served as township treasurer and later during the early 1920s as the village treasurer. Hanna also served on both the library board and the school board. As if this was not enough, Hanna also served as Birmingham Postmaster from 1899 to 1913.

---

*Why I was inspired: John Hanna did so much to make Birmingham a better place while also tending to his various business interests.*

*--Submitted by Robert Lutey*