



**BIRMINGHAM
POLICE
DEPARTMENT**

**2014
ANNUAL REPORT**

INDEX

	Page
Auxiliary	19
Calls for Service	17
Chief's Message	2 - 3
Crime Analysis	
Adult Arrest Comparison Report	12
Adult Arrest By Month Report	13
Juvenile Arrest Disposition Report	18
Organizational Chart	4
Personnel	
Changes	8
Distribution	5
Register	6 – 7
Seniority Distribution	9
Summary of Offenses, Arrests, and Violations	10
Summary of Offenses – Three Year Trend	11
Traffic	
Accident Summaries / Trends	14
Parking Violation Summaries	15
Moving Violation Summaries	16



CHIEF'S MESSAGE

January 2015

Birmingham City Commission
Joseph A. Valentine, City Manager

I would like to assure the citizens of Birmingham that the men and women of the Birmingham Police Department are committed to serving this community in excellence and believe in our mission statement which reads:

The Birmingham Police Department is committed to fairness, compassion, and excellence in providing services sensitive to the priorities and needs of the community; the protection of life and property, the apprehension of criminal perpetrators, and the prevention of crime in accordance with the law.

In 2014, we continued to seek ways to enhance services while remaining fiscally sound. The retirement of our K-9 officer in 2014 prompted us to analyze the program and we have concluded not to fund this operation. We have expanded our cooperative efforts by assigning one officer to a multijurisdictional special investigative unit. This group is comprised of investigators from the Troy, Auburn Hills, Bloomfield Township, and Birmingham Police Departments. The unit will concentrate on serial crimes that cross jurisdictional boundaries such as burglary, larceny from auto, credit card frauds, armed robbery and assault. This will add to our existing inter-local agreements which include Oakland County Narcotics Enforcement (NET), Major Case Assistance Team (MCAT), South Oakland Tactical Unit, and our combined 9-1-1 Public Safety Answering Point (PSAP) with Beverly Hills for police / fire / EMS dispatch.

The city continues to be a regional destination, hosting 21 special events for which the department provided extra officers for crowd control and traffic safety. These range from one day events to week long street closures in the downtown including the "longest one day event" of the year, the Woodward Dream Cruise.

We spent approximately \$185,000 utilizing drug forfeiture funds to enhance our video camera system, replacing the server with high definition digital equipment, upgraded 32 cameras, and installed an improved wireless network for all of the remote cameras located throughout the city and in three parks.

The chart below summarizes this report delineating calls for service, major crime categories, and arrest categories. Included is data from 25 and 50 years ago for comparison purposes. Of note are the larceny and burglary reports which are significantly down.

	2014	2013	2012	1989	1964
Total calls for service	17,678	18,372	16,571	19,175	15,691
Number of sworn officers	30	30	29	37	39
Homicide	0	0	1	0	0
Criminal Sexual Conduct I, III	2	3	2	3	2
Robbery	3	6	7	11	7
Vandalism	57	58	90	291	N/A
Burglary	26	32	64	139	78
Larceny	156	187	237	524	680
Vehicle theft	13	15	17	71	47
Operating While Impaired	110	110	61	377	26
Adult arrests	524	586	351	602	238
Juvenile arrests	28	33	44	78	275

Larceny reports are down to 156 compared to 237 in 2012, 524 in 1989 and 680 in 1964. Many of these 156 cases originate from items taken from unlocked vehicles and garages. The reduction appears to be from increased vigilance on the part of the public.

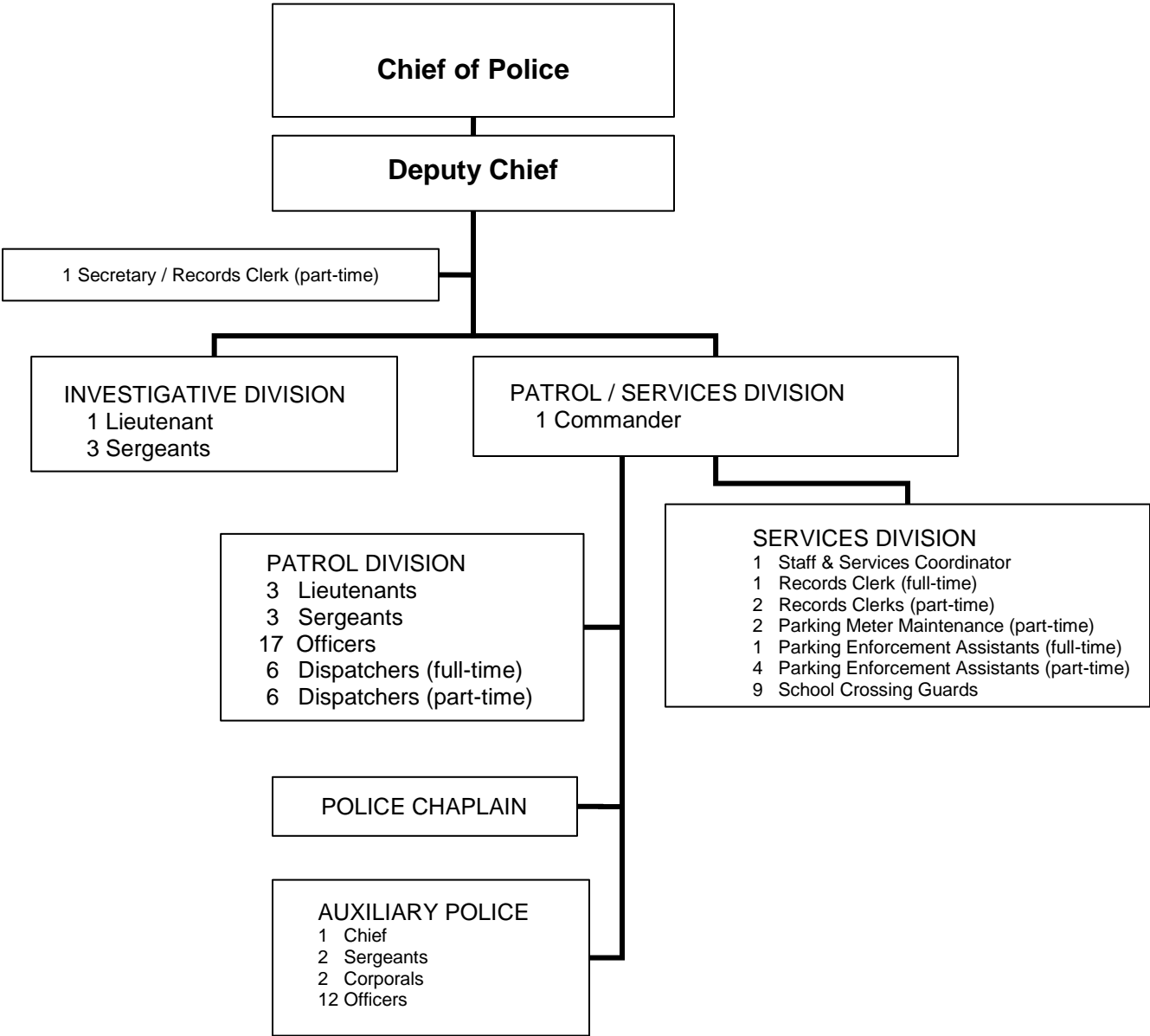
There were 26 burglaries reported to the department in 2014. (64 in 2012 / 139 in 1989). This number is, frankly, astounding particularly in light of the fact that there are over 10,000 residential, commercial, industrial properties listed in the city.

I would like to thank the men and women of the department and the many volunteers comprising the police auxiliary unit for their many efforts throughout the year.

Please contact the Birmingham Police Department at (248) 530-1870 or visit our website at <http://bhamgov.org>

Donald A. Studt
Chief of Police

2014 ORGANIZATIONAL CHART



**BIRMINGHAM POLICE DEPARTMENT
PERSONNEL DISTRIBUTION
2014**

FULL TIME SWORN POSITIONS	2014	2013	2012	2011	2010
CHIEF OF POLICE	1	1	1	1	1
DEPUTY CHIEF	1	1	1	1	1
COMMANDER	1	1	1	1	1
LIEUTENANT	4	4	4	4	4
SERGEANT	6	6	6	6	9
POLICE OFFICER	17	17	16	16	14
SWORN OFFICER TOTAL	30	30	29	29	30
FULL TIME CIVILIAN POSITIONS	2014	2013	2012	2011	2010
PARKING ENFORCEMENT ASSISTANT	1	1	1	1	1
STAFF & SERVICES COORDINATOR	1	1	1	1	1
DISPATCHER	6	6	6	5	5
RECORDS CLERK	1	1	1	1	1
FULL TIME CIVILIAN TOTAL	9	9	9	8	8
FULL TIME EMPLOYEE TOTAL	39	39	38	37	38
PART TIME CIVILIAN POSITIONS					
PARKING METER MAINTENANCE	2	2	2	2	2
SCHOOL CROSSING GUARD	9	8	8	10	7
CLERK / SECRETARY	3	3	3	3	3
PARKING ENFORCEMENT ASSISTANT	4	4	4	4	3
DISPATCHER	6	4	3	4	0
PART TIME CIVILIAN TOTAL	24	21	20	23	15

**BIRMINGHAM POLICE DEPARTMENT
PERSONNEL REGISTER
2014**

CHIEF OF POLICE		DONALD A. STUDT
DEPUTY CHIEF		MARK H. CLEMENCE
COMMANDER	PATROL / SERVICES DIVISION	TERRY KIERNAN
LIEUTENANTS	DAY SHIFT AFTERNOON SHIFT MIDNIGHT SHIFT INVESTIGATIVE DIVISION	SCOTT GREWE MICHAEL ALBRECHT CAROL MILLGARD CHRIS BUSEN
SERGEANTS	PATROL DAY SHIFT PATROL AFTERNOON SHIFT PATROL MIDNIGHT SHIFT INVESTIGATORS	MATTHEW BALDWIN KATHERINE LONG RAY FAES GREGORY WALD JERRY HALL CHRISTOPHER KOCH MICHAEL LYON
POLICE OFFICERS		JOSEPH BUNTING TIM EXELBY ANTHONY GIANNOLA JOSH HUSTED YACOUB ISEID MARC JEWELL RYAN KEARNEY GINA MOODY CASEY PEDERSEN MICHAEL ROMANOWSKI MARK MORRISON MICHAEL SIMPSON REBEKAH SPRINGER TYLER STUEF PHILLIP WEBB JEFFREY WHIPPLE JORDAN ZALE
DISPATCHERS	FULL TIME	SHARON BLAIR ANITA BURNS JOYA DAVIS FRANK RUSSELL MELISSA TOOLE

		TEREZ WILLIS
DISPATCHERS	PART TIME	RENEE BACKLUND JOELLEN HAINES KENNETH HITCHCOCK THOMAS MAHER JOSEPH MISIAK VACANT
STAFF & SERVICES COORDINATOR	FULL TIME	ELLEN DEVIEW
RECORDS CLERK	FULL TIME	JENNIFER DAVIS
SECRETARY RECORDS CLERK	PART TIME	JENNIFER BACON DARLENE ST. CHARLES VERONICA WILLIAMS
PARKING ENFORCEMENT ASSISTANTS	FULL TIME PART TIME	JAMES LOTRIDGE DAVID CUSTER JAMIE IRWIN CHRISTINE PABIAN LINDA RODRIGUEZ
PARKING METER MAINTENANCE AND COLLECTION	PART TIME	DONALD CAMPBELL ALFONSO ROLDAN
SCHOOL CROSSING GUARDS	PART TIME	RICK ARGUS ESTHER GADWA ALEXANDRA HARRIS LAURA KEATON KENNETH MCQUILLAN GEORGE OLTMAN, JR. IRIS POOLE AUDREY REED * MARY SCZESNY * DENNIS SHEPPARD ** CHESTER ZUCHLEWSKI

* SHARED POSITION
** SUBSTITUTE

2014 PERSONNEL CHANGES

PROMOTED

Katherine Long to Sergeant
Gregory Wald to Sergeant
Melissa Toole to Dispatcher (full time)

RETIRED

Peter Ruby, Sergeant
Ulrich Schwarz, Police Officer
Patricia McCrae, Dispatcher

RESIGNED

Michael Byberg, Police Officer
Brooke Vaillancourt (part time)

TRANSFERRED

None

RECRUITED

Michael Byberg, Police Officer
Yacoub Iseid, Police Officer
Renee Backlund, Dispatcher (part time)
Joseph Misiak, Dispatcher (part time)
Casey Pedersen, Police Officer
Jordan Zale, Police Officer
Jamie Irwin, Parking Enforcement Assistant (part time)

2014 SENIORITY DISTRIBUTION

OFFICER / SERGEANT

00-04 years of service	9
05-09 years of service	2
10-14 years of service	4
15-19 years of service	6
20-24 years of service	0
25-30 years of service	3
Total	24

LIEUTENANT / COMMANDER

05-09 years of service	0
10-14 years of service	2
15-19 years of service	2
20-24 years of service	0
25-30 years of service	0
31-35 years of service	1
Total	5

CHIEF / DEPUTY CHIEF

25-35 years of service	1
35+ years of service	1
Total	2

DISPATCHERS

00-04 years of service	7
05-09 years of service	0
10-14 years of service	1
15-19 years of service	0
20 + years of service	3
Total	11

SUMMARY OF OFFENSES, ARRESTS, AND VIOLATIONS

The primary goal of the department is protection of life and property, prevention of crime, and apprehension of criminal perpetrators. We strive to deliver the best possible police service in a professional, courteous manner to the residents of the city and to those who work, travel, and shop here.

In 2014, we responded to 17,678 calls for police service, a decrease of 3.78% from the previous year.

Group A incidents were down 15.26%
2013 = 622
2014 = 561

Group A arrests were down 32.47%
2013 = 77
2014 = 52

Group B incidents were down 14.40%
2013 = 257
2014 = 220

Group B arrests were down 14.88%
2013 = 168
2014 = 143

Group C incidents were down 4.46%
2013 = 17,484
2014 = 16,705

Group C arrests were up 6.30%
2013 = 238
2014 = 253

Traffic citations were down 6.74%
2013 = 8,564
2014 = 7,987

Total parking violations were up 8.22%
2013 = 31,535
2014 = 34,127

**SUMMARY OF OFFENSES
THREE YEAR TREND**

OFFENSES	2014	2013	2012	3 YEAR AVERAGE
CRIMINAL HOMICIDE	0	0	1	0.33
CRIMINAL SEXUAL CONDUCT I, III	2	3	2	2.33
ROBBERY	3	6	7	5.33
ASSAULT ALL	50	50	82	60.66
BURGLARY	26	32	64	40.66
LARCENY	156	187	237	193.33
MOTOR VEHICLE THEFT	13	15	17	15.00
ARSON	1	0	2	1.00
CRIMINAL SEXUAL CONDUCT II, IV	1	2	2	1.66
FORGERY / COUNTERFEITING	6	4	7	5.66
FRAUD	105	84	107	98.66
EMBEZZLEMENT	6	6	3	5.00
VANDALISM	57	58	90	68.33
OPERATING WHILE INTOXICATED	110	110	61	93.66
TOTALS	536	557	682	591.66

ADULT ARREST COMPARISON REPORT

OFFENSES	2014	2013	2012	3 YEAR AVERAGE
CRIMINAL SEXUAL CONDUCT I, III	0	1	0	.33
HOMICIDE	0	0	1	.33
ROBBERY	0	3	1	1.33
ASSAULT	26	31	25	27.33
BURGLARY	0	7	6	4.33
LARCENY	25	31	28	28.00
MOTOR VEHICLE THEFT	1	4	1	2.00
ARSON	0	0	0	0.00
TOTAL PART A	52	77	62	63.66
CRIMINAL SEXUAL CONDUCT II, IV	0	1	0	.33
FORGERY / COUNTERFEITING	1	1	1	1.00
FRAUD	11	8	6	8.33
EMBEZZLEMENT	3	4	2	3.00
VANDALISM	4	4	2	3.33
OPERATING WHILE INTOXICATED	94	97	54	81.66
OTHER PART B	30	53	53	45.33
*TOTAL PART B	143	168	118	143.00
WARRANT ARRESTS	116	85	52	84.33
MISCELLANEOUS DRIVING OFFENSES	137	153	68	119.33
TOTAL PART C	253	238	120	203.66
GRAND TOTAL	448	483	300	410.33

ADULT ARREST BY MONTH REPORT

MONTH	2014	2013	2012	3 YEAR AVERAGE
JANUARY	41	44	22	35.66
FEBRUARY	41	37	19	32.33
MARCH	45	54	25	41.33
APRIL	44	54	31	43.00
MAY	36	51	33	40.00
JUNE	30	49	33	37.33
JULY	25	47	28	33.33
AUGUST	50	51	35	45.33
SEPTEMBER	44	45	30	39.66
OCTOBER	49	31	30	36.66
NOVEMBER	43	44	27	38.00
DECEMBER	22	47	38	35.66
TOTAL	470	554	351	458.33

ACCIDENT SUMMARIES / TRENDS

ACCIDENT TYPE	2014 TOTAL	2013 TOTAL	2012 TOTAL	3 YEAR AVERAGE
FATAL INJURY	0	0	1	0.33
PERSONAL INJURY	87	70	109	88.66
PROPERTY DAMAGE	789	741	723	751.00
TOTAL ACCIDENTS	876	811	833	840.00
# PERSONS KILLED	0	0	2	0.66

2014 PARKING VIOLATIONS SUMMARY

PARKING VIOLATIONS	TOTAL
2014	34,127
2013	31,535
2012	30,182
2011	31,844
2010	27,695
2009	33,827
2008	34,592
2007	40,614
2006	45,214
2005	44,394
2004	49,410
METER VIOLATIONS	TOTAL
2014	29,629
2013	28,162
2012	27,935
2011	29,737
2010	25,252
2009	30,314
2008	30,584
2007	35,274
2006	39,883
2005	38,344
2004	42,870
NON - METER VIOLATIONS	TOTAL
2014	4,498
2013	3,373
2012	2,247
2011	2,107
2010	2,443
2009	3,508
2008	4,008
2007	5,340
2006	5,331
2005	6,050
2004	6,540

2014 MOVING VIOLATIONS SUMMARY

MOVING HAZARDOUS VIOLATIONS	TOTAL
2014	3,707
2013	4,039
2012	2,285
2011	2,040
2010	2,275
2009	2,429
2008	3,100
2007	4,320
2006	4,739
2005	3,846
2004	3,637
2003	2,725
2002	3,894
2001	4,174
MOVING NON-HAZARDOUS VIOLATIONS	TOTAL
2014	4,280
2013	4,525
2012	4,325
2011	3,082
2010	3,054
2009	4,551
2008	2,378
2007	2,119
2006	2,390
2005	2,816
2004	2,813
2003	2,370
2002	2,702
2001	3,271



CALLS FOR SERVICE

2014	17,678
2013	18,372
2012	16,571
2011	16,983
2010	17,713
2009	16,031
2008	20,104
2007	18,749
2006	19,997
2005	20,003
2004	20,004
2003	19,628
2002	20,978
2001	19,276
2000	19,469
1999	21,150
1998	21,250
1997	20,950
1996	20,094
1995	19,269
1994	18,864
1993	19,900
1992	18,579
1991	19,286

2014 JUVENILE ARRESTS / DISPOSITIONS

	2014	2013	2012
ARRESTS			
MALE	24	28	34
FEMALE	4	5	10
TOTAL	28	33	44
FELONY *	5	8	5
MISDEMEANOR *	23	25	35
DISPOSITIONS			
PARENTAL CONFERENCE	2	0	0
YOUTH ASSISTANCE	19	25	32
JUVENILE COURT	8	8	12

* MAY REPRESENT MULTIPLE CHARGES



AUXILIARY POLICE REPORT

The Auxiliary Police is comprised of dedicated volunteers who either live or work in the City of Birmingham.

Each member has been trained through the Police Academy Reserve Officer Training Program.

Auxiliaries assist regular officers during many special events held throughout the year and act as back up to the regular officers on patrol. Members of the Auxiliary Police are perhaps most visible while providing crowd, traffic control, and security for high school sporting events and also while participating in foot patrol assignments in the downtown area throughout summer.

In 2014 auxiliary officers provided 1,272 hours of service to the community.

AUXILIARY POLICE ROSTER AS OF DECEMBER 31, 2014

CHIEF

Kurt Gerber

SERGEANTS

Dean Auger
Timothy Griswold

CORPORALS

Berge Avesian
Brian Fitzerman

OFFICERS

Louis Almassy
Alex Calderone
Don Campbell
Robert Denton
James Glavin
Troy Hairston
Brennan Hamilton
David Jevahirian
Robert Prew
Kyle Ramfos
Michel Saikalis
Charles Tallinger